

2734 Banning Road
 Cincinnati, OH 45253
 (513) 923-3777
 (513) 923-1111 fax

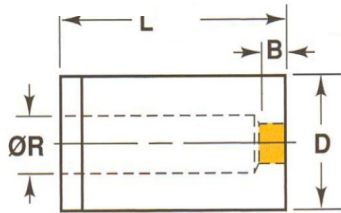


Porter Precision Products

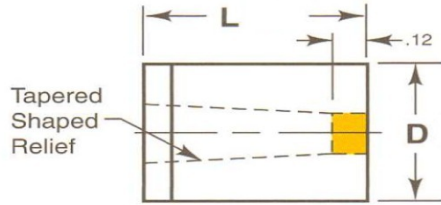
Blank Button Sketch Tool

Porter@PorterPunch.com or PorterPrecision@bellsouth.net

660 James Road
 Alpharetta, GA 30004
 (770) 751-7234
 (770) 751-7238 fax

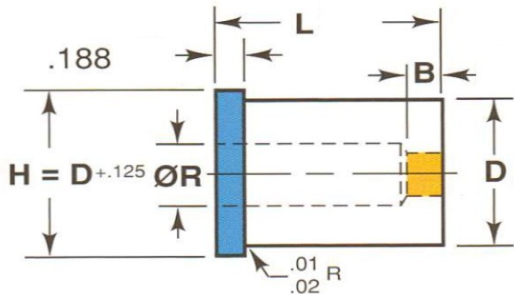


**Press-Fit
 C'Bore Relief**

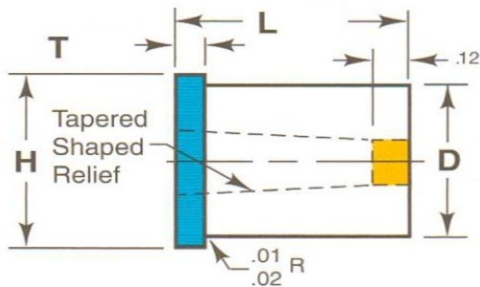


**Press-Fit
 Tapered Relief**

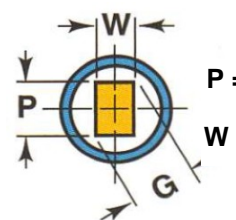
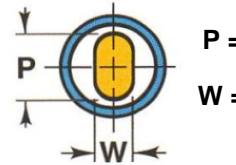
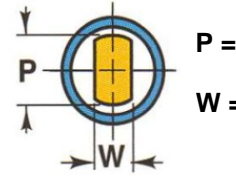
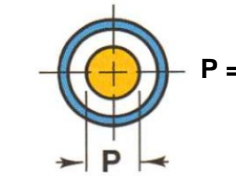
**Press-Fit Precision
 Tolerance**



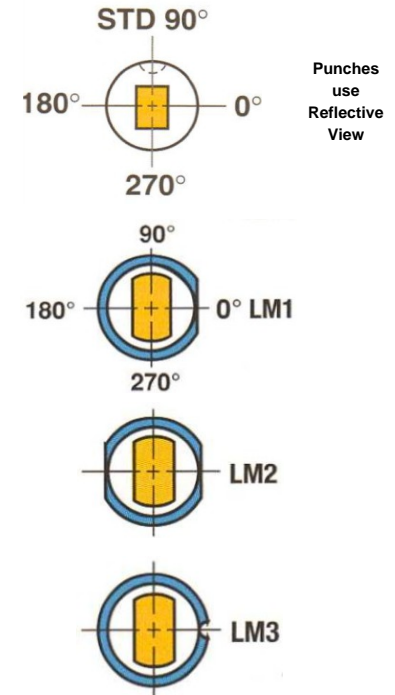
**Headed
 C'Bore Relief**



**Headed
 Tapered Relief
 Headed Precision
 Tolerance**



Locating Devices



LM3 Std Dowel is .125 Dia.
 Custom Dowel Size (Dia.)

*All tolerances will be held to industry standards unless otherwise specified

See page 38 of our catalog for further details on keying devices

Company Name		Tool #		Part#/Det#		Description (Porter Precision Products)	
Body Dia "D"	Length "L"	Material	Nose Length "B" or L2	Coating	Locating Device & Location	"T" if not Std (Xtreme)	
Notes and or other Alteration requests							Qty