

2734 Banning Road  
Cincinnati, OH 45253  
(513) 923-3777  
(513) 923-1111 fax

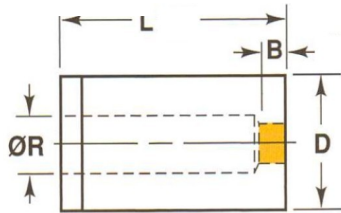


# Porter Precision Products

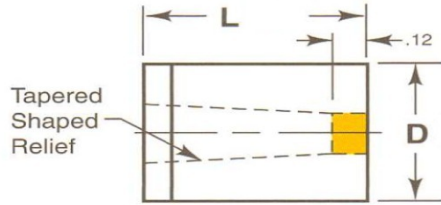
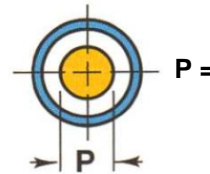
Blank Button Sketch Tool

Porter@PorterPunch.com or PorterPrecision@bellsouth.net

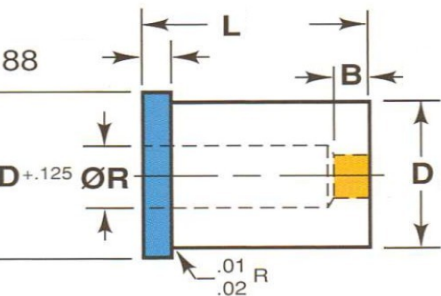
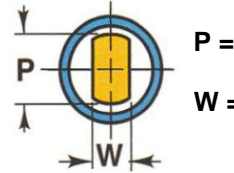
660 James Road  
Alpharetta, GA 30004  
(770) 751-7234  
(770) 751-7238 fax



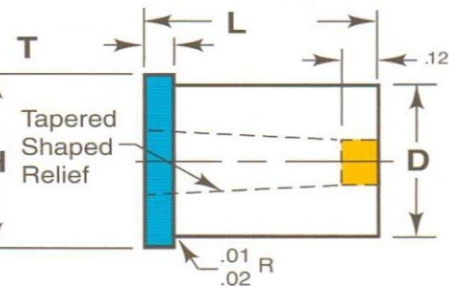
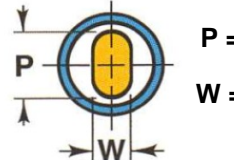
**Press-Fit  
C'Bore Relief**



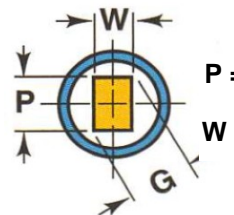
**Press-Fit  
Tapered Relief**



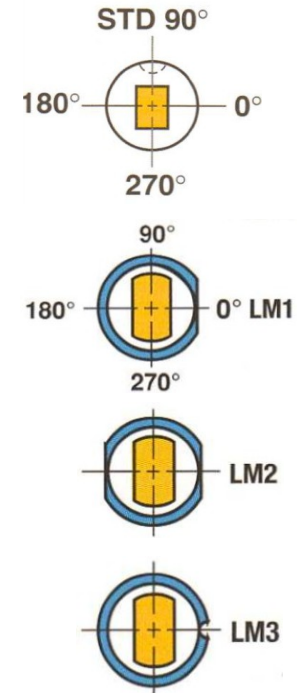
**Press-Fit Precision  
Tolerance**



**Headed  
C'Bore Relief**



## Locating Devices



Punches  
use  
Reflective  
View

LM3 Std Dowel is .125 Dia.  
Custom Dowel Size (Dia.)

\*All tolerances will be held to industry standards unless otherwise specified

See page 38 of our catalog for further details on  
keying devices

Company Name		Tool #		Part#/Det#		Description (Porter Precision Products)	
Body Dia "D"	Length "L"	Material	Nose Length "B" or L2	Coating	Locating Device & Location	"T" if not Std (Xtreme)	
Notes and or other Alteration requests							Qty